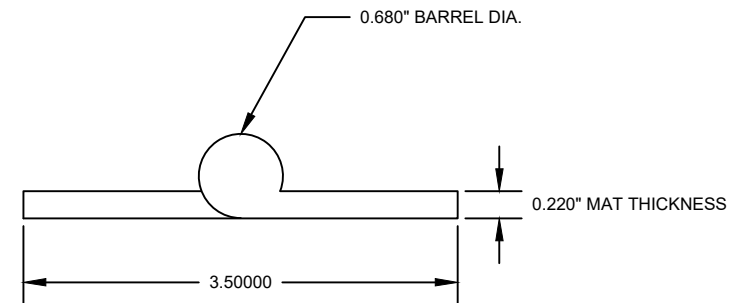



NOTES:

- STAINLESS STEEL CAST HINGE
- HOLES COUNTERSUNK FOR #18 SCREW
- 0.680" BARREL DIA.
- 0.220" MAT. THICKNESS
- ROUNDED CORNERS



APPROVED BY	 JEFCO MFG INC FT. LAUDERDALE PH 954-527-4220 WWW.JEFCOMFG.COM	MATERIAL:	MATERIAL ALLOY:	FINISH:	DATE:	DWG BY:
SIGN		Stainless Steel	T-302	Electro-Polished	03/28/2023	AK
PRINT		REVISIONS:	TOLERANCES:	DESC:	SSC-220350-475 HC	
			<small>STANDARD DIE CUT EDGES. ALL DIMENSIONS TO BE HELD TO +/- .015" NOTE ALL PRODUCTS ARE QUOTED USING STANDARD MILL GAGE MATERIAL. DO NOT SCALE</small>	COMPANY:	JEFCO MFG INC	NO: 14000